

Anti-PRLR hlgG1 Reference Antibody (Mat3)

Product Information

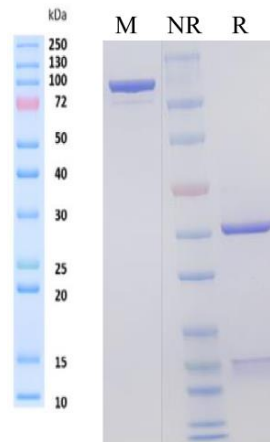
Product Name	Anti-PRLR hlgG1 Reference Antibody (Mat3)
Storage temp.	Store at 2-8°C short term (1-2 weeks).Store at ≤ -20°C long term. Avoid repeated freeze-thaw.
Catalog# / Size	GM-87347MAB-1mg / 1 mg GM-87347MAB-5mg / 5 mg GM-87347MAB-25mg / 25 mg GM-87347MAB-50mg / 50 mg GM-87347MAB-100mg / 100 mg

Antibody Information

Expression System	CHO
Aggregation	< 5% as determined by SEC-HPLC
Purity	> 95% as determined by SDS-PAGE
Endotoxin	< 1 EU/mg, determined by LAL gel clotting assay
Sterility	0.2 μm Filtered
Target	PRLR
Clone	Mat3
Alternative Names	HPRL, MFAB, RI-PRLR, hPRLrI
Source/Isotype	Human IgG1(L234A/L235A/M252Y/S254T/T256E/P329A), Kappa
Application	Flow cytometry
Description	This gene encodes a receptor for the anterior pituitary hormone, prolactin, and belongs to the type I cytokine receptor family. Prolactin-dependent signaling occurs as the result of ligand-induced dimerization of the prolactin receptor. Several alternatively spliced transcript variants encoding different membrane-bound and soluble isoforms have been described for this gene, which may function to modulate the endocrine and autocrine effects of prolactin in normal tissue and cancer.
Formulation	phosphate-buffered solution, pH 7.4.

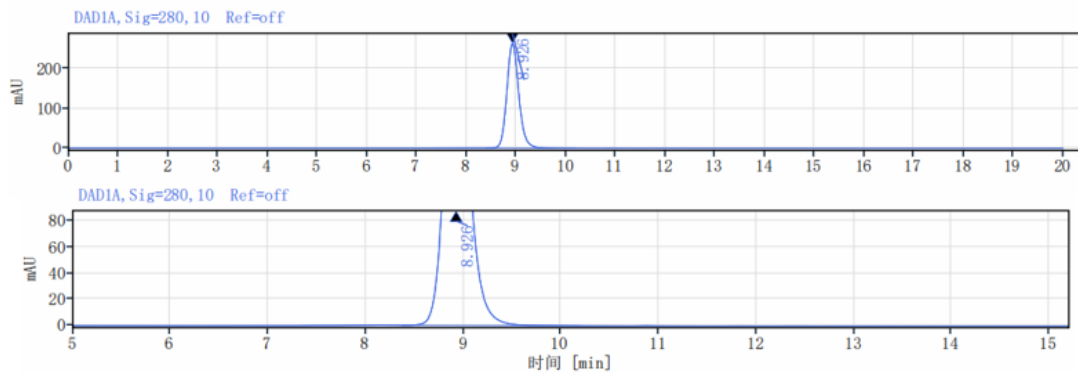
Data Examples

SDS-PAGE



On SDS-PAGE under reducing (R)/non-reducing(N-R) condition. The gel was stained overnight with Coomassie Blue. The purity of the protein is greater than 95%.

SEC-HPLC



The purity of this product is more than 95% verified by SEC-HPLC

Flow cytometry

H_PRL(prolactin) Reporter Cell Line (Catalog # GM-C19941) was stained with Anti-PRLR hlgG1 Reference Antibody (Mat3) (Catalog # GM-87347MAB) or isotype control antibody, followed by anti-Human IgG APC-conjugated Secondary Antibody.

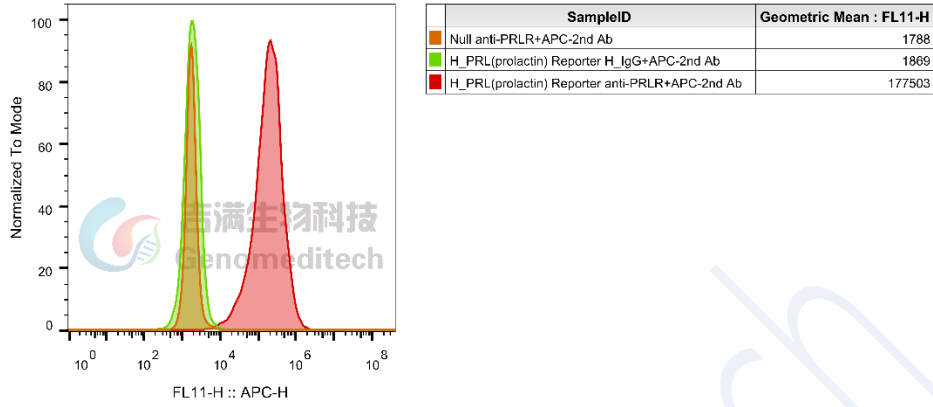


Fig. FACS